

A0

INSTALLATION DRAWING
DRAWING NUMBER CP5316-1CD

IF THIS DOCUMENT IS PRINTED IN HARDCOPY, IT IS FOR INFORMATION USE ONLY AND THEREFORE IS NOT SUBJECT TO UPDATING CONTROLS. ALWAYS REFER TO SOLIDWORKS VIEWER FOR LATEST ISSUE

FIRST ANGLE PROJECTION

THIS DRAWING IS CONFIDENTIAL AND IS SUPPLIED ON THE EXPRESS CONDITION THAT IT SHALL NOT BE LOANED OR COPIED OR DISCLOSED TO ANY OTHER PERSON OR USED FOR ANY OTHER PURPOSE WITHOUT THE WRITTEN CONSENT OF AP RACING LTD.

DRAWING ISSUE
3



AP Racing
Wheler Road
Conventry
CV3 4LB
Tel: +44 024 7663 9595
Fax: +44 024 7663 9599
e-mail: sales@apracings.co.uk
Web site: http://www.apracings.com

© AP Racing Ltd. 2025

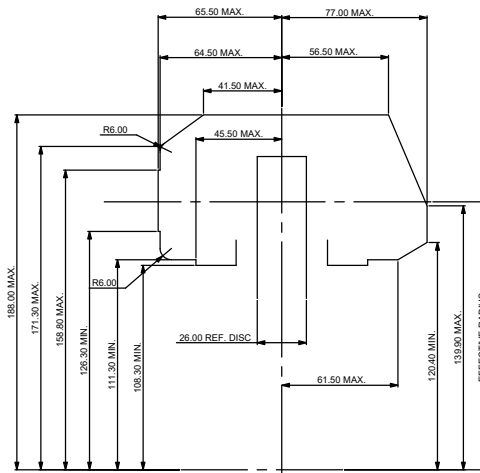
ISSUE HISTORY			
ISSUE	DATE & ECN NO.	DETAILS	CHG'D BY
1	16/11/03 R1067	FIRST ISSUE	TTF
2	24/01/04 R2094	LOGO UPDATED	SW
3	03/03/25 WF-00 3226_02	DRG BORDER UPDATED. PART NUMBER TABLE UPDATED WITH LATEST PART NUMBERS. COLOUR COLUMN ADDED	BG-MMO 314

CALIPER SPECIFICATION

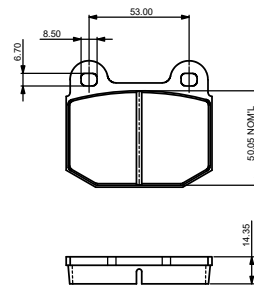
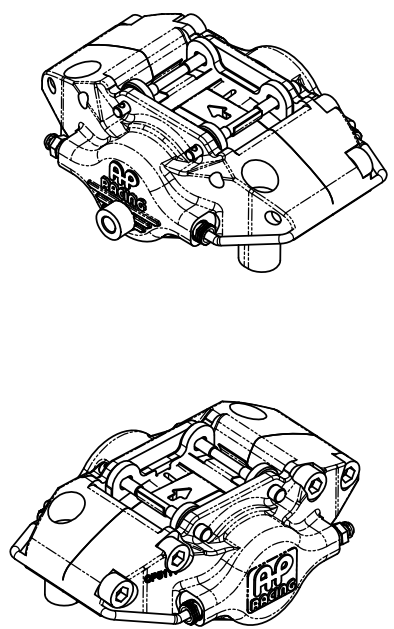
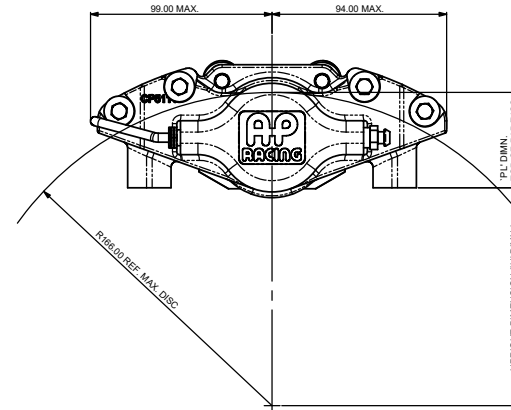
BORE SIZE	38.10 (1.50")
PISTON AREA / PAD	11.4 SQ. CM
DISC DIA. MAX.	332.00
DISC THICKNESS MAX.	26.00
DISC THICKNESS MIN. (WORN CONDITION)	24.00 (DIFFERENTIAL WEAR NOT TO EXCEED 0.50MM SIDE TO SIDE)
HYDRAULIC FEED	M10 X 1.0
DRY WEIGHT (LESS PADS)	1.50kg
PAD FAMILY	CP5119
EFFECTIVE RADIUS (ON DIA. 332.00 DISC)	142.00
'PL' DIMN.	50.50
OFFSET 'C' DIMN.	27.50
MTG. HOLE CENTRES 'D' DIMN.	130.00
PAD FRICTION MATERIAL MIN. THICKNESS	2.50
PAD RETENTION	2 x RETAINER PIN WITH R CLIP
TIGHTENING TORQUES	BLEED SCREW : 17Nm HYDRAULIC FEED : 25Nm
CORROSION PROTECTION	FLUID RESISTANT BLACK PAINT FINISH - ALUMINIUM BODY BOOT TYPE DIRT SEALS

CALIPER IDENTIFICATION CHART

RHT	RIGHT HAND TRAILING (BEHIND AXLE)
LHT	LEFT HAND TRAILING (BEHIND AXLE)
RHL	RIGHT HAND LEADING (IN FRONT OF AXLE)
LHL	LEFT HAND LEADING (IN FRONT OF AXLE)

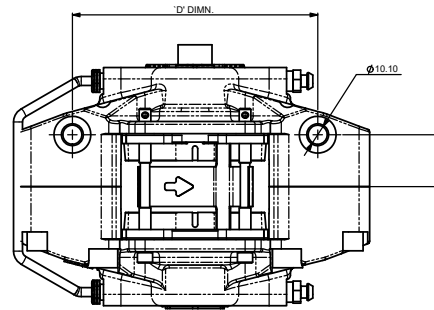


CALIPER RADIAL PROFILE AS FITTED ON Ø332.00 DISC.



CP5119 PAD FAMILY

PAD AREA - NOMINAL:
SLOTTED - 33.70 cm²
FULL AREA - 35.10 cm²



PART NUMBERING CONVENTION		
PART NUMBER	DESCRIPTION	COLOUR
CP5316-2ABG19	RHT/LHL- SIDE FEED- NO ANTI KNOCK BACK SPRING	BLACK GLOSS
CP5316-2ABK2	RHT/LHL- SIDE FEED- NO ANTI KNOCK BACK SPRING	BLACK SEMI GLOSS
CP5316-3ABG19	LHT/RHL- SIDE FEED- NO ANTI KNOCK BACK SPRING	BLACK GLOSS
CP5316-3ABK2	LHT/RHL- SIDE FEED- NO ANTI KNOCK BACK SPRING	BLACK SEMI GLOSS

SCALE 1:1	SHEET 1 OF 1
DRAWN	TTF
APPROVED	
DERIVED FROM #	
PROJECT NO.	R1067
CLASS	2
SECTOR	ROAD BRAKES
TITLE	CALIPER INSTALLATION DRAWING Ø332 MAX. x26 DISC INSTALLATION
DRAWING NUMBER	CP5316-1CD